



Department
for Environment
Food & Rural Affairs

The importance of environmental monitoring and observation in meeting evidence needs

UKEOF Conference

27th February 2020

Robert Bradburne. Deputy Chief Scientific Adviser, Defra.



Department
for Environment
Food & Rural Affairs

**The world
is changing**

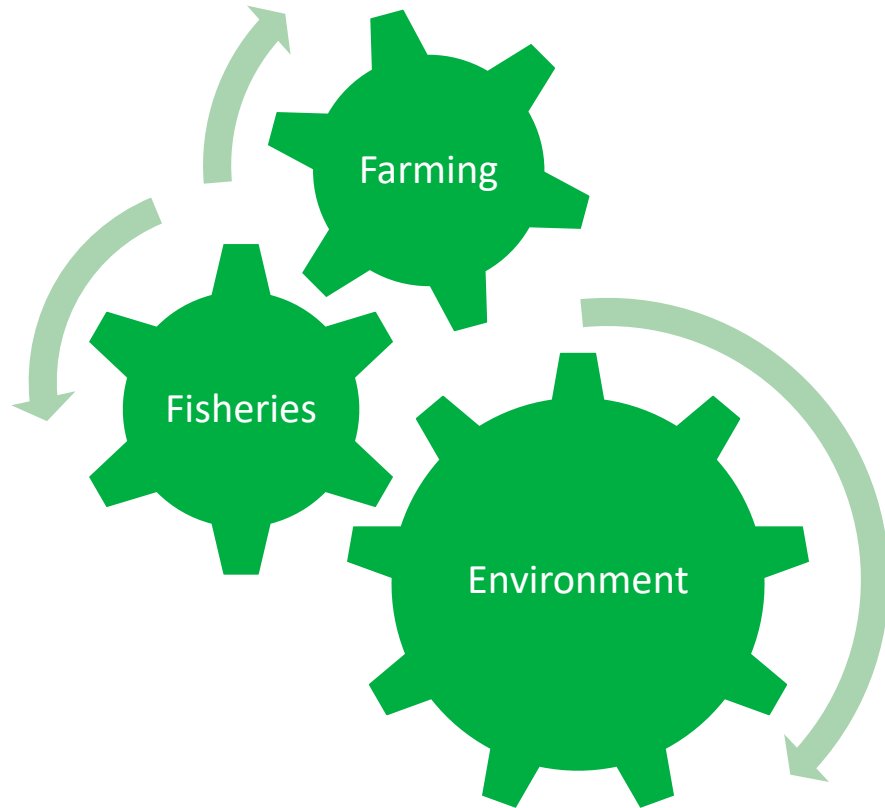
The Environment

IPBES

IPCC

Both showing rapid change

Policies and politics



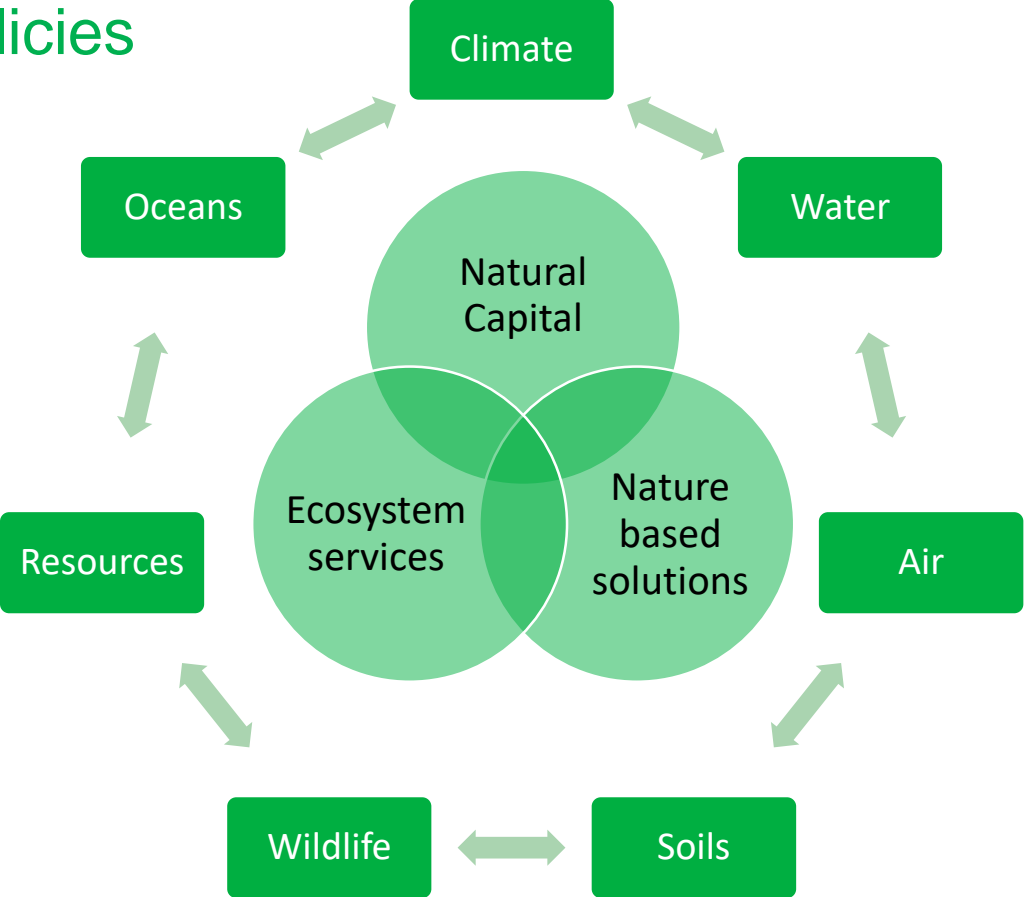
Public awareness of a range of issues relatively high

Technology with Tradition



Making the links

Between policies

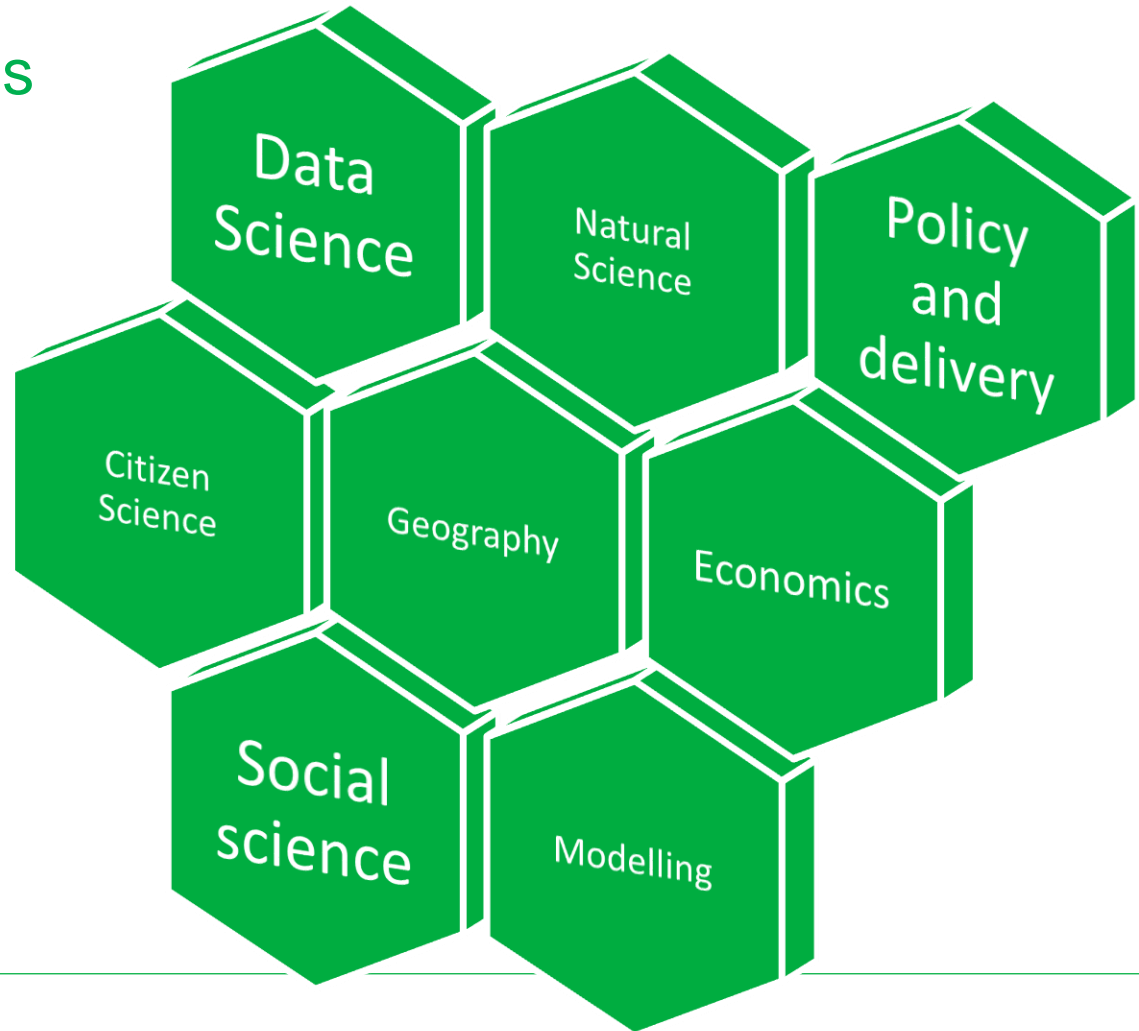


Between Countries

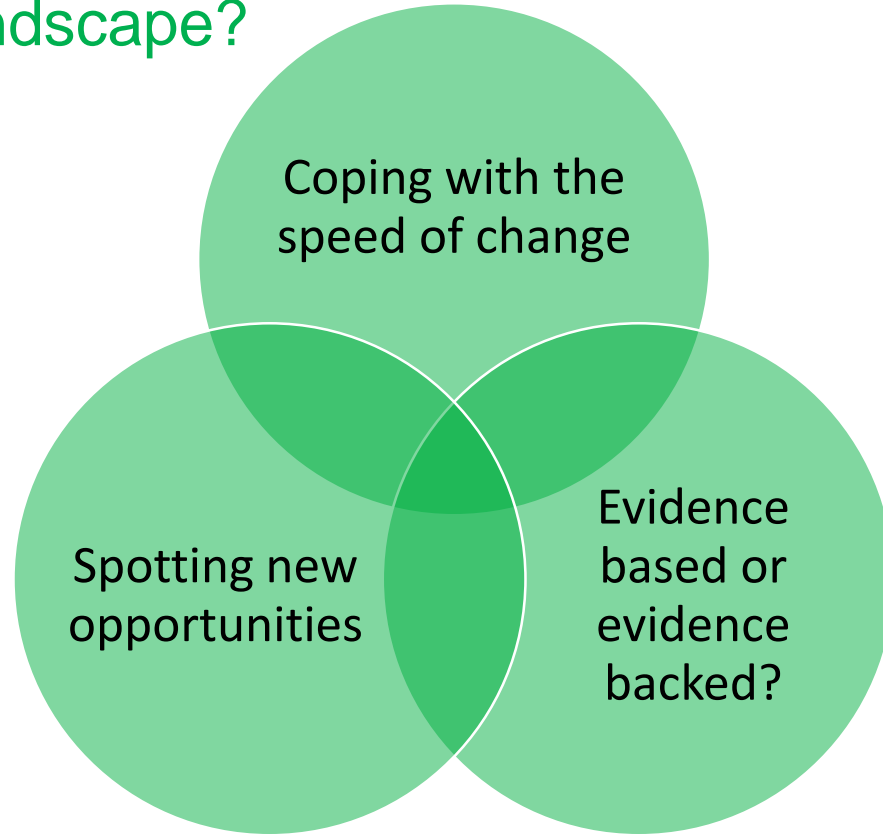
Across the UK

Exploring global linkages

Between disciplines

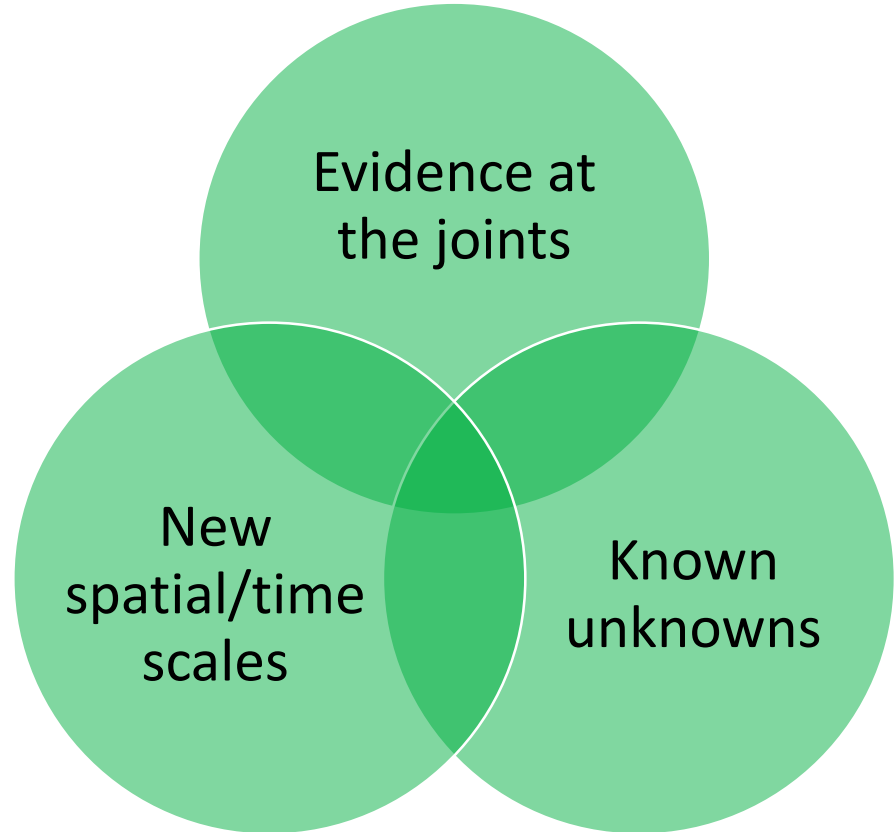


How can environmental monitoring adapt to the changing policy and delivery landscape?

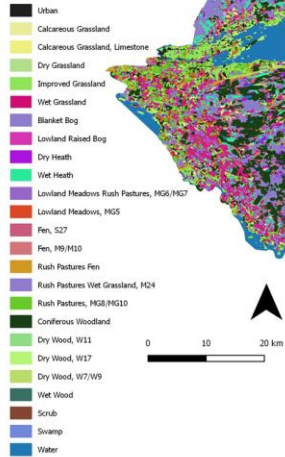


What are the new data we will need to understand change?

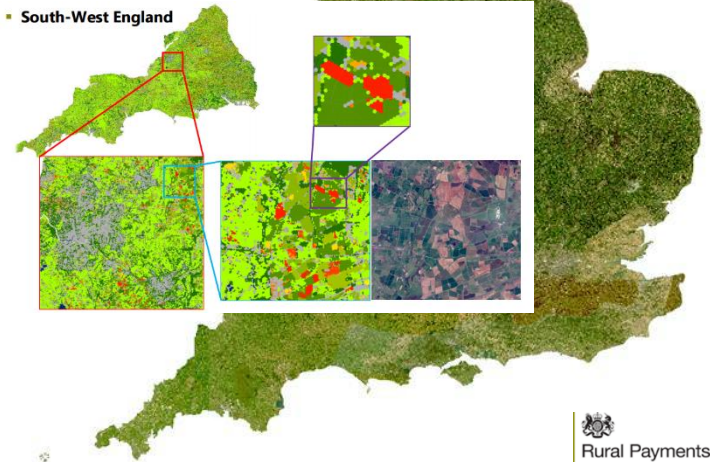
e.g., soil biology and function



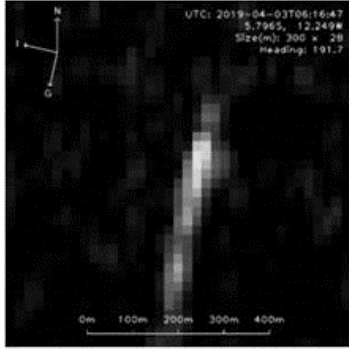
What new or better targeted insights can we provide?



South-West England




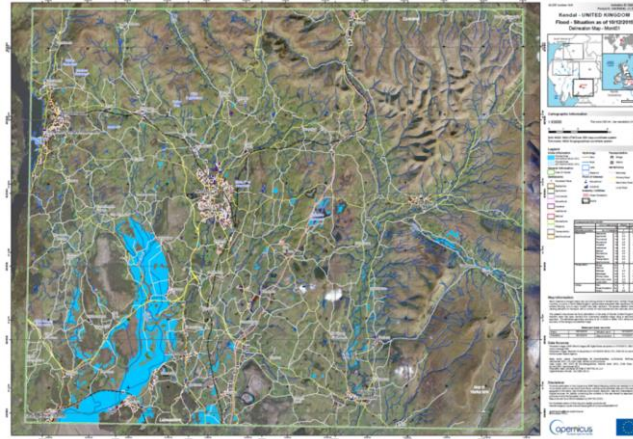
Where can technology significantly change the way that Government operates?



SAR detection of a tuna longliner (DVWF) from Ascension. Image Credit: OceanMind


Marine Management Organisation


Centre for Environment Fisheries and Aquaculture Science




Flood prediction and response



predicting recently planted forest units




Don't forget the infrastructure..... and the people

 **Earth Observation Data Service**

Home Layers Maps **Layer Groups** Guest User Help

Cloud-free mosaic



Info

Title	Cloud-free mosaic
Abstract	S2 imagery
Publication Date	Oct. 15, 2019, 1:03 p.m.
Owner	guest

[More info](#) -

Remove Layer Group

Layer Groups
This Group Layer includes the following layers:

- [S2B_20190226_lat51lon364_T30UVB_OR_B137_utm30n_osgb_vmsk_sharp_rad_sref_dem_stdsref](#)
- [S2B_20190226_lat54lon081_T31UCV_OR_B137_utm31n_osgb_vmsk_sharp_rad_sref_dem_stdsref](#)
- [S2B_20190226_lat53lon233_T31UDU_OR_B137_utm31n_osgb_vmsk_sharp_rad_sref_dem_stdsref](#)
- [S2B_20190226_lat52lon089_T31UCT_OR](#)

Permissions
Click the button below to change the permissions of this layer group.

[Change Layer Group Permissions](#)

OGC Link

[Layer.group.WMS.Capabilities](#)

How can UKEOF help us rise to the challenge ahead?